



34 Dotterel Drive Semaphore Park SA

2 1 1

34 Dotterel Drive presents an opportunity to the most fastidious of buyers to secure a home that has had plenty of love invested into it, along with being a stone's throw away from the gorgeous John Dyer Lake & a short commute to the Semaphore Beachfront. Sited on a prized, low maintenance allotment, this home truly boasts easy living in the highly sought-after suburb of Semaphore Park.

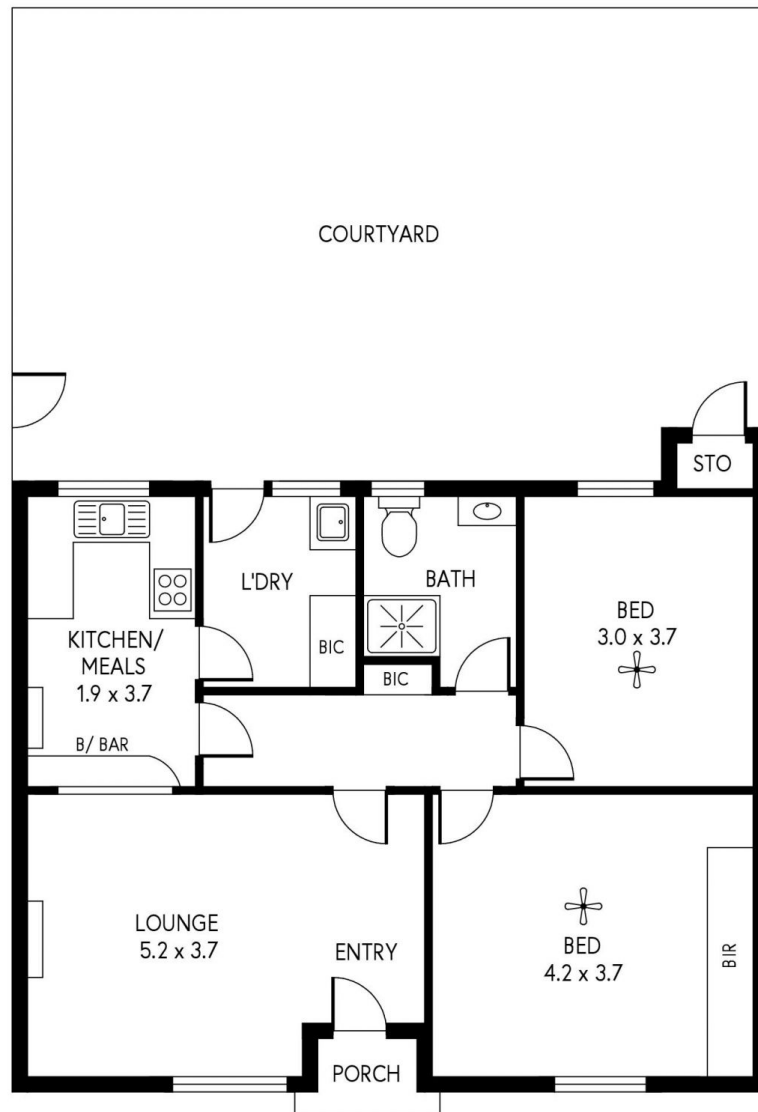
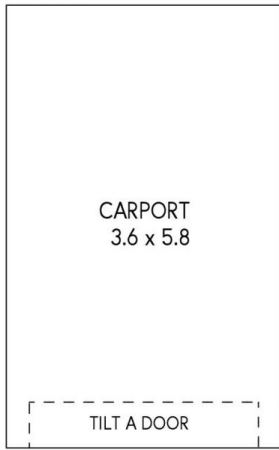
A secure colour bond fence to the surrounds of the property will ensure you feel safe, secure, and give you the privacy you desire while utilising the whole allotment. The front of the home is spacious, green and has plenty of room for you to pop out a table and chairs and enjoy your morning cuppa on the front porch while listening to the serenity surrounding your new, beautiful home.

[For full version visit the website](https://www.trinitypropertygroupsa.com/sale/sa/western-beachside-suburbs/semaphore-park/residential/house/7133756)

Type : House
Price : \$ 410,000
View : <https://www.trinitypropertygroupsa.com/sale/sa/western-beachside-suburbs/semaphore-park/residential/house/7133756>



Kelly Hooper
08 8251 5222



34 DOTTEREL DRIVE, SEMAPHORE PARK



INTERNAL - 67.2 SQM
EXTERNAL - 83.4 SQM
TOTAL - 150.6 SQM